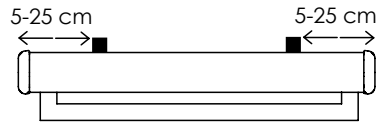


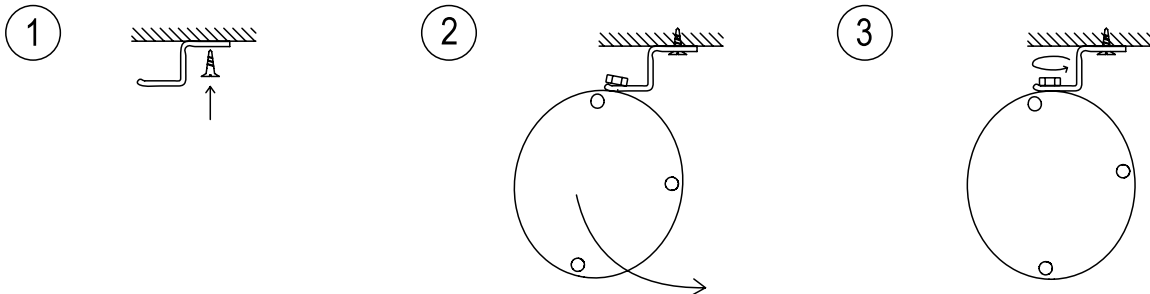
# LITE MANUAL SCREEN (LMS)

OPERATION GUIDE/BRUKSANVISNING/GEBRAUCHSANWEISUNG/GEBRUIKSAANWIJZING/KÄYTTÖOHJEET

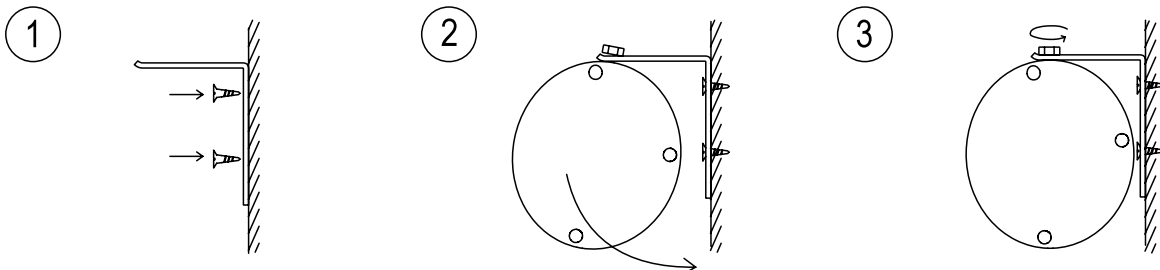
MOUNTING / MONTERING / MONTAGE / MONTAGE / ASENNU



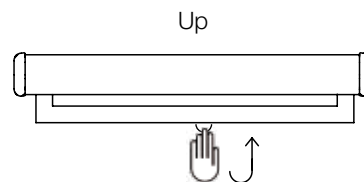
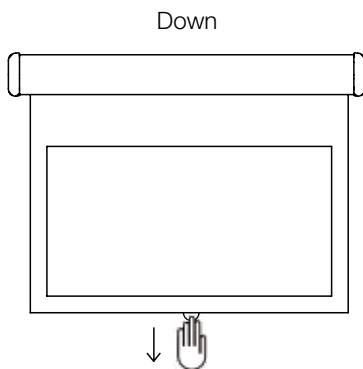
CEILING / TAK / DACH / PLAFOND / KATTO



WALL / VÄGG / WAND / MUUR / SEINÄ



USE / ANVÄRANDE / ANWENDEN / HET GEBRUIK / KÄYTTÖ



Pull down and then retract with control.  
Drag ned duken och återför den kontrollerat.  
Herunter ziehen und wieder kontrolliert einrasten.  
Trek het scherm naar beneden en laat het voorzichtig oprollen.  
Vedä kangas alas ja palauta se hallitusti.

**FOR SERVICE/HUOLTO:**

SWEDEN..... www.kingpinscreens.com  
THE NETHERLANDS..... www.kingpinscreens.nl

NORWAY..... www.avpartner.no  
OTHER COUNTRIES..... www.kingpinscreens.com  
www.kingpinscreens.com